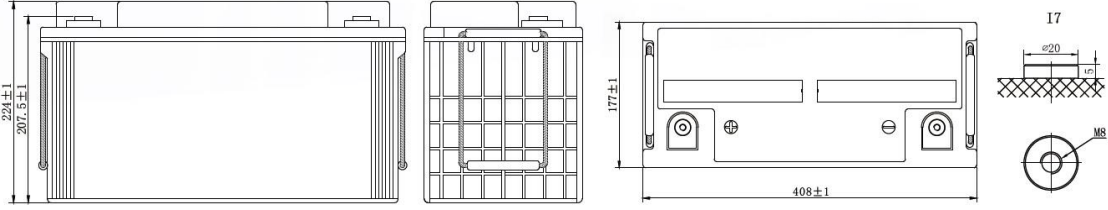


- ✘ Kurşun-Karbon Teknolojisi
- ✘ AGM Separatör
- ✘ HRPSoC Teknolojisi: Negatif Elektrolide Karbon Takviyesi ile Sülfatlaşma Sorununa Çözüm.
- ✘ %15 DOD' da 10000 üzeri Çevrim sayısı
- ✘ ABS Kutu; Akünün Dayanımını Artırır

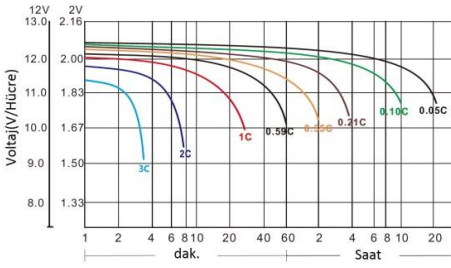
Uygulama Alanları;

- ✘ Solar Enerji
- ✘ Rüzgar Enerjisi
- ✘ Haberleşme
- ✘ Bilgi Sistemleri
- ✘ Sabit Tesis Güç Kaynakları
- ✘ Endüstriyel Sistemler°

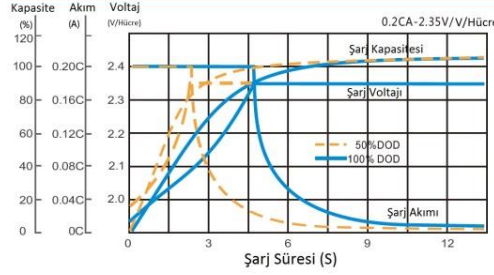


Akü Tipi	YGCP12-106(A)				
Kapasite (25°C)	106Ah C20				
Akü Ölçüleri	Birim	Uzunluk	Genişlik	Yükseklik	Toplam Yükseklik
	(mm)	408 ±2mm	177 ±2mm	224 ±2mm	224 ±2mm
Yaklaşık Ağırlık	34Kg ±%5				
İç Direnç	5.5mΩ25°C/77°F				
Kısa Devre Akımı	1200A(5s)				
Çalışma Sıcaklığı Aralığı	Deşarj: -15 °C - +50 °C Şarj: 0 °C - +40 °C Depolama: -15 °C - +40 °C				

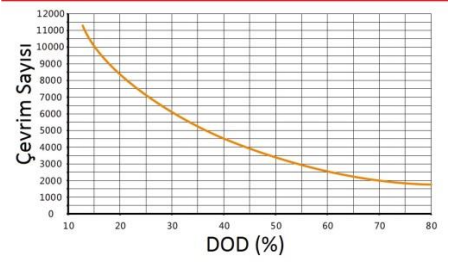
Deşarj Karakteristikleri (25°C/77°F)



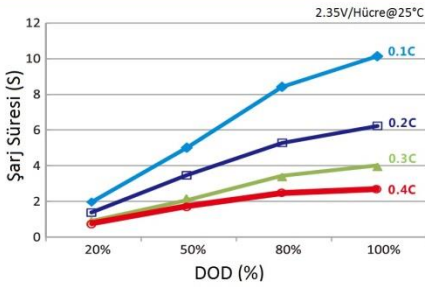
Şarj Karakteristikleri



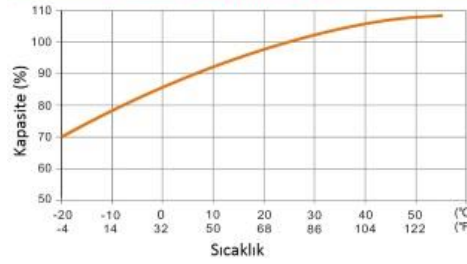
Çevrim Ömrü - DOD İlişkisi



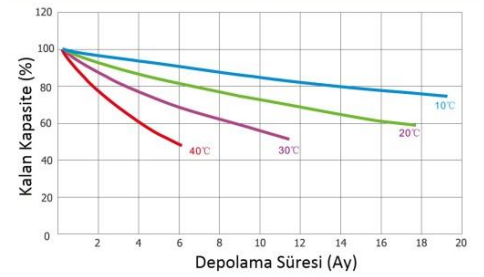
Şarj Süresi - DOD İlişkisi



Sıcaklık - Kapasite İlişkisi



Self Deşarj - Zaman İlişkisi



Sabit Akım - Deşarj Tablosu (A)@25°C (77°F)

K.V / Zaman	5dk	10dk	15dk	20dk	30dk	45dk	1s	2s	3s	4s	5s	6s	8s	10s	20s
1.85V/cell	181.0	127.2	109.1	97.3	80.8	65.2	54.2	32.7	23.8	19.5	16.8	14.7	11.9	9.82	5.23
1.80V/cell	219.0	147.6	121.8	108.0	86.6	68.5	56.7	34.1	24.9	20.2	17.2	15.1	12.2	10.0	5.29
1.75V/cell	250.7	166.6	135.0	116.5	91.7	72.1	59.4	35.5	25.9	20.7	17.6	15.5	12.4	10.2	5.36
1.70V/cell	278.5	180.0	144.8	124.5	96.2	74.7	61.3	36.9	26.7	21.3	18.0	15.8	12.6	10.3	5.42
1.67V/cell	308.9	192.1	150.8	131.0	101.1	77.9	63.5	38.1	27.4	21.9	18.5	16.2	12.8	10.5	5.48
1.60V/cell	326.6	201.6	158.5	135.8	104.4	80.1	65.0	38.9	28.0	22.5	19.0	16.5	13.0	10.6	5.55

Sabit Güç - Deşarj Tablosu (A)@25°C (77°F)

K.V / Zaman	5dk	10dk	15dk	20dk	30dk	45dk	1s	2s	3s	4s	5s	6s	8s	10s	20s
1.85V/cell	338.1	240.3	208.0	187.1	157.2	128.2	107.0	64.9	47.6	39.0	33.6	29.6	24.0	19.9	10.8
1.80V/cell	403.8	275.3	229.6	205.7	166.9	133.6	111.3	67.4	49.5	40.2	34.5	30.2	24.5	20.2	10.9
1.75V/cell	453.1	306.0	251.1	219.4	175.2	139.7	115.9	69.8	51.2	41.1	35.1	30.9	24.9	20.5	11.0
1.70V/cell	492.4	325.4	266.0	232.7	182.3	143.8	119.1	72.3	52.7	42.2	35.8	31.5	25.3	20.8	11.1
1.67V/cell	536.4	341.7	274.1	242.3	190.3	149.3	122.8	74.4	53.8	43.2	36.6	32.1	25.6	21.1	11.2
1.60V/cell	556.1	352.9	283.6	248.4	194.9	152.1	124.8	75.3	54.6	44.0	37.5	32.6	26.0	21.3	11.3