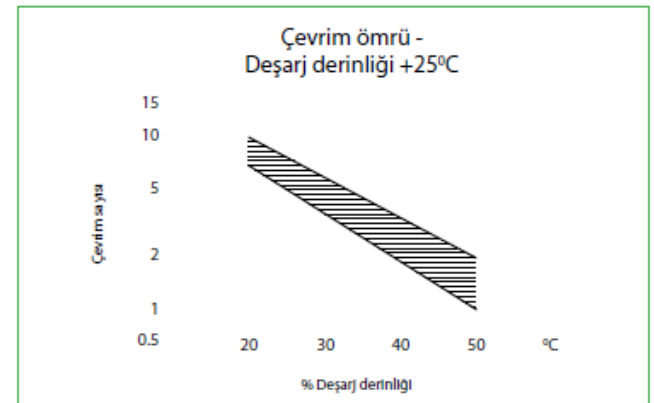
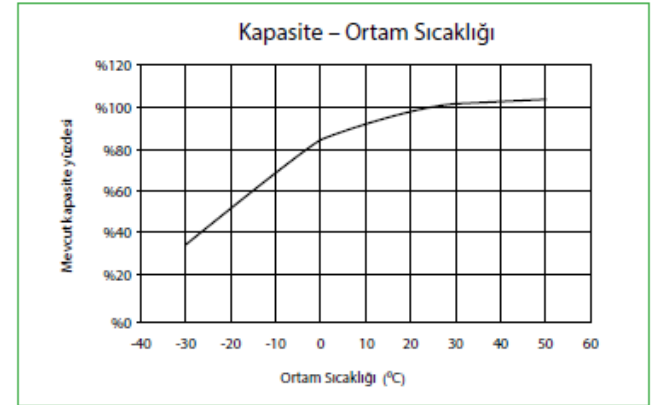
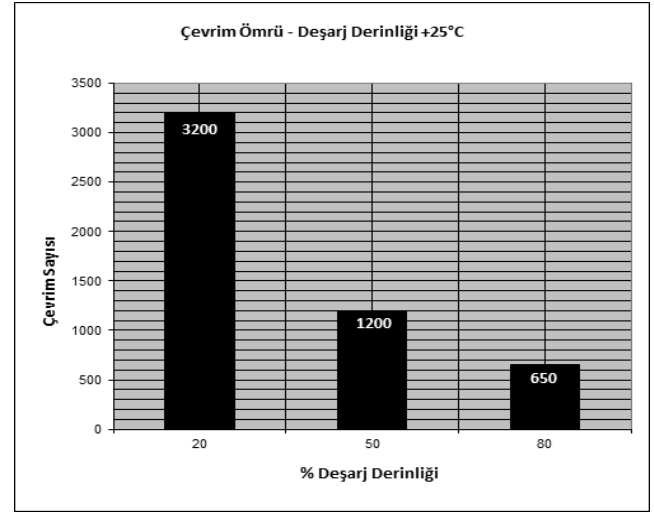

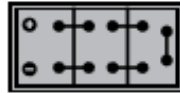



Kod	YGE12-200
Dizayn Numarası	27002042E
Nominal Kapasite (Ah)	200
Kutu Tipi / Hücre Sayısı	C / 6
Kutu Malzeme	PP
Voltaj (V)	12
Elektrolit Tipi	Jel
Ağırlık (kg) (+ - %5)	74,9
Boyutlar (mm) U / G / Y (H1-H2)	518/274/213-236[+5/-1mm]
Terminal Tipi	Yuvarlak (DIN 72311-4) + M8 Opsiyonel
Float Voltajı	13,6 - 13,8 VDC @25°C
Cycle Voltajı	14,25 - 14,6 VDC @25°C
Önerilen Şarj Etme Akım Limiti (Ah)	20
Deşarj Kesme Voltajı 100% Deşarj Derinliği D.O.D.	1,75 VDC @ (A) <=0,2 C
Kapasite C20 (Ah)	200,0
Kapasite C10 (Ah)	185,8
Kapasite C5 (Ah)	169,3
Kapasite C3 (Ah)	155,2
Kendi Kendine Deşarj	Ayda %2'den az @25°C
Depolama Süresi	6 ay @25°C. Kullanımdan önce şarj edilmesi tavsiye edilir.
Çevrim Ömrü DOD %80	650
Çevrim Ömrü DOD %50	1200
Çevrim Ömrü DOD %20	3200
İç Direnç [miliohm]	5,1@25°C
Kısa Devre Akımı (Amper)	3483

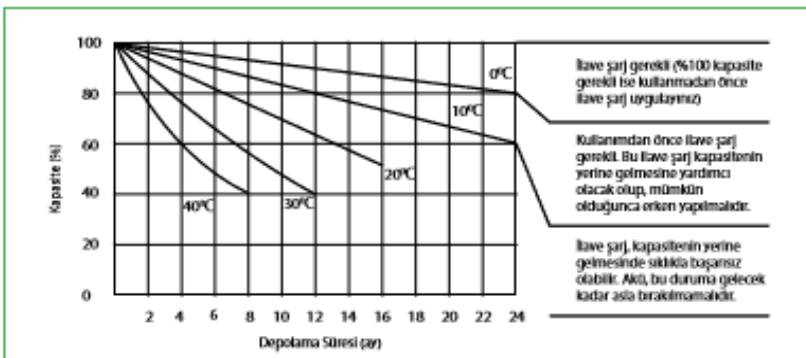


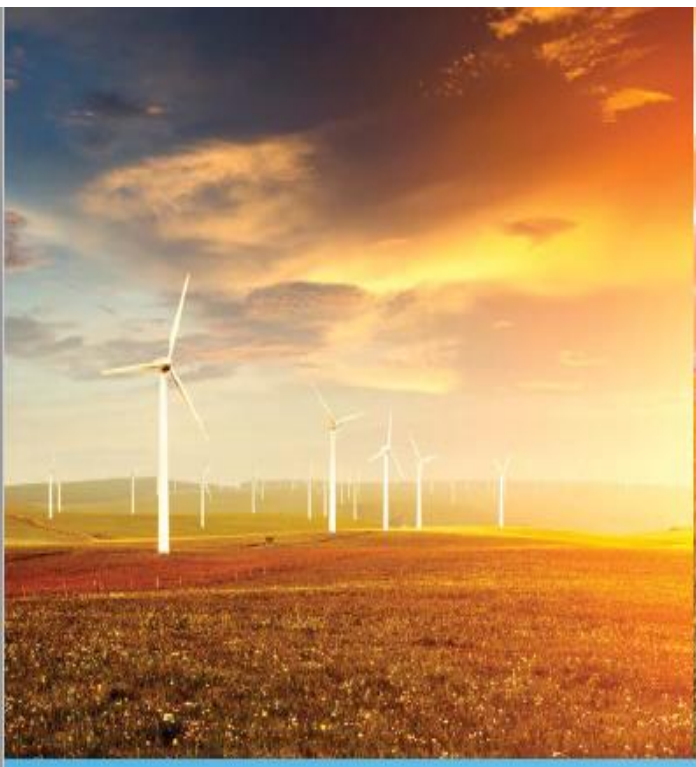
 Terminal Tip A
DIN 72311-4 Yuvarlak Tip

Yerleşim (3)



 Terminal Tip S
(M-8 Opsiyonel)





Yiğit Akü A.Ş.

Organize Sanayi Bölgesi Oğuz Caddesi No: 2 Sincan / Ankara - TURKEY
Tel : +90 312 267 02 80 - Fax: +90 312 267 08 61 - 267 40 00
endustriyel@yigitaku.com
www.yigitaku.com