

- Oxygen recombination technology:
Maintenance-free.
- The patent grid alloy:
Less gassing, low selfdischarging.
- Special paste formula:
Additives for deep discharge, long cycle life.
- High quality AGM separator:
Extend cycle life and prevent micro short circuit.
- The patent Nano silica gel electrolytes, extend cycle life and improve the deep discharge performance.
- Cast on strap (COS) welding technology for high consistency and reliability.
- ABS container: increase the strength of battery.

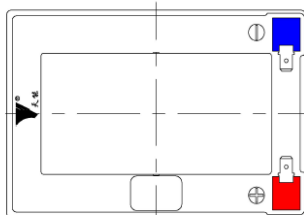
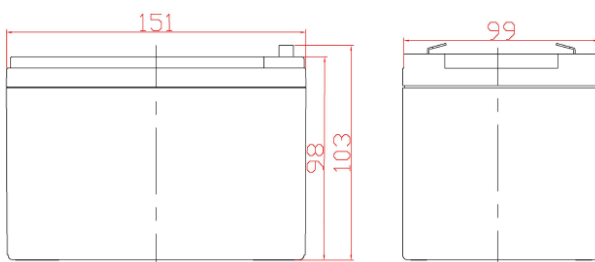


Application:

- *Electric vehicle
- *Lawn mowers
- *Electric toys
- *Electric tools

- *Sweeper
- *Wheelchairs
- *Illumination light
- *Golf trolley and golf cart

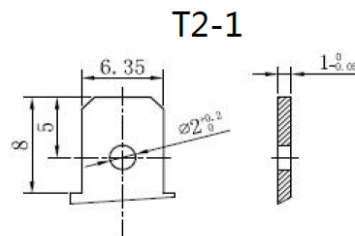
Dimension



| | |
|------------------|--------------------|
| Length | 151±2mm / 5.94inch |
| Width | 99±2mm / 3.9inch |
| Container Height | 98±2mm / 3.86inch |
| Total Height | 103±2mm / 4.06inch |

Terminal

Terminal Type: T2-1



Weight

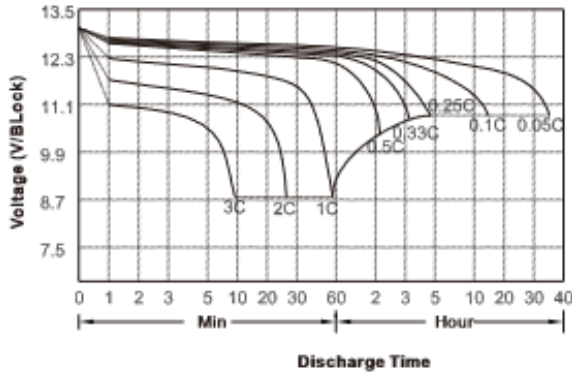
4.3kg 9.48lbs



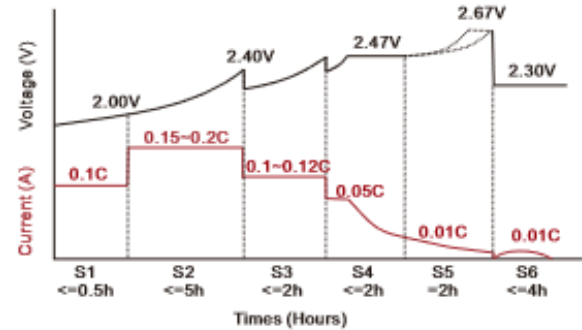
| Battery Model | YGD12-20(A) E-Bike | | | |
|--|--|-------|---------------------|--------------|
| Capacity (25°C) | C(20) | C(10) | C(5) | C(1) |
| | 15 Ah | 14 Ah | 13 Ah | 12 Ah |
| Dimensions | Length | Width | Height | Total Height |
| | 151 mm | 99 mm | 98 mm | 103 mm |
| Approx Weight | 4,3 kg ± %3 | | | |
| Internal Resistance | Full charged @25°C, equal or less than 13 mOhm | | | |
| Self Discharge | Capacity declined @25°C, 3 months %10, 6 months %15, 12 months %30 | | | |
| Capacity Affected By Temperature (20 HR) | 40°C | 25°C | 0°C | -15°C |
| | %102 | %100 | %85 | %65 |
| Charge Voltage (25°C) | Float Voltage | | Max. Charge Voltage | |
| | 13.5-13.8V, Initial Charging Current 3A or small | | 14.4-14.8V | |

Performance Curve

Discharge Characteristics (25°C)

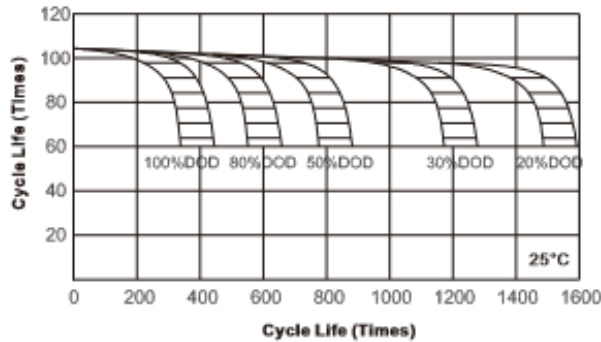


Charge Characteristics (20°C)

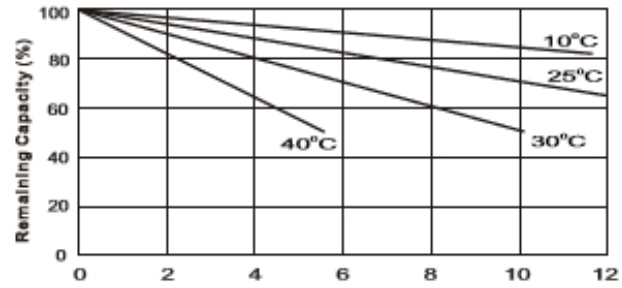


The above charge voltage is based on 20°C(68°F), for other temperature, the temperature coefficient should be adopted. Temps coefficient: -3mV/°C/cell.

Cycle Life With Depth Of Discharge



Self discharge Characteristics



The Lead acid battery need to be recharged every 6 months during Storage

Yiğit Akü AŞ

Organize Sanayi Bölgesi Oğuz Caddesi No: 2 Sincan / Ankara - TÜRKİYE

Tel: +90 312 267 02 80 - Faks: +90 312 267 08 61 - 267 40 00

endustriyel@yigitaku.com

www.yigitaku.com